

## Reasoning

Name :

Class :

Date :

Mark :

/20

%

1) Put the numbers in the correct positions in the Carroll Diagram:

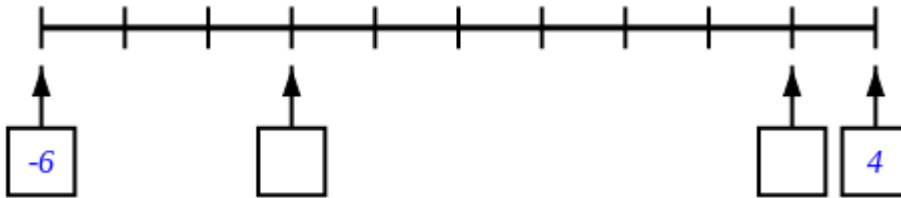
[1]

20    15    17    12

	multiple of 5	not a multiple of 5
multiple of 2		
not a multiple of 2		

2) Write in the missing numbers

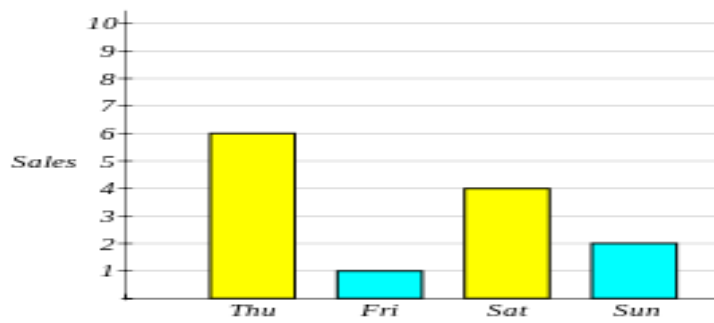
[1]



3) Write down the digit that means **hundredths** in 0.35

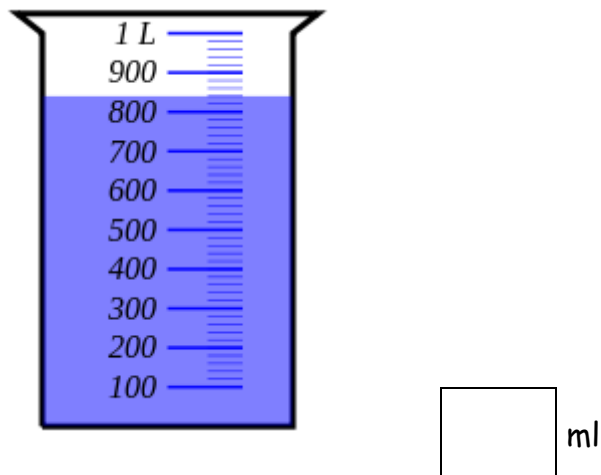
[1]

- 4) The bar graph shows the number of scooters a store sold in the last 4 days. [1]



How many scooters did they sell altogether?  scooters

- 5) Find the amount of liquid in the container in millilitres. [1]



- 6) Order the numbers below from smallest to largest [1]

0.86      0.812      0.873      0.89      0.8

smallest

largest

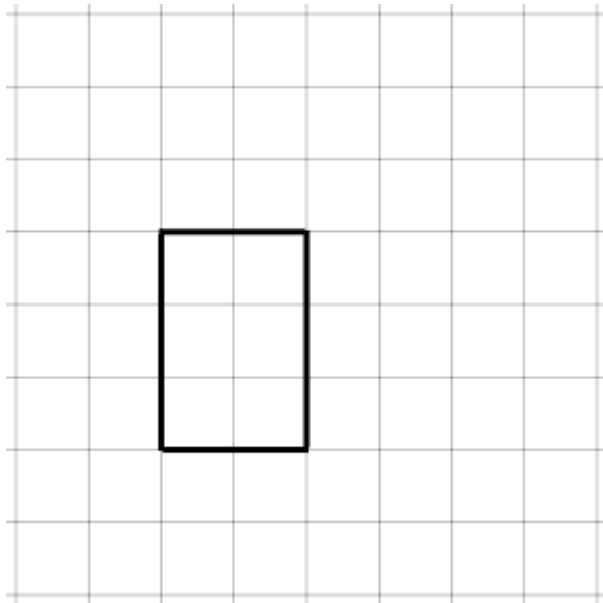
7) Write the number in words

[1]

64158

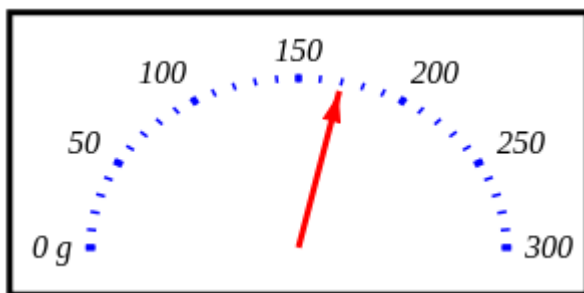
8) Translate the shape 2 boxes to the right and 3 boxes up.

[1]



9) The weighing scales show the mass of a pineapple.

[1]



How much do 11 pineapples weigh?  kg

10) Two shops, A and B, both sell bouncy balls.

[1]

<i>Shop A</i>
<i>bouncy balls</i>
<i>8 for 64p</i>

<i>Shop B</i>
<i>bouncy balls</i>
<i>5 for 45p</i>

At which shop are the bouncy balls the best value for money?  
Show all your working below.

11) Complete the magic square so that all rows, columns and diagonals have the same total. [1]

17		18
13	12	
		7

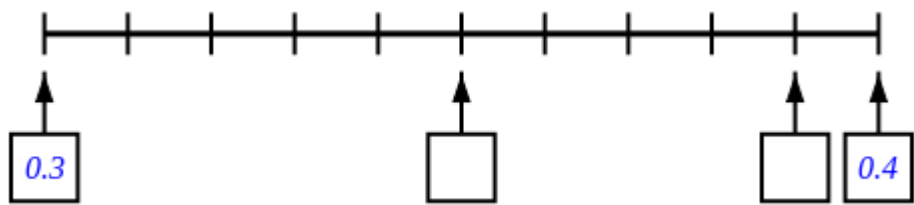
12)  $1.469 + \boxed{\phantom{000}} = 10$  [1]

13) Select the correct inequality (< or >) to make a true statement [1]

$$\frac{5}{12} \boxed{\phantom{00}} \frac{4}{9}$$

14) Write in the missing numbers

[1]



15) Complete the table to show the properties of 4 shapes.

[1]

Shape	Number of sides	Number of right angles	Regular shape? (yes or no)
	4	0	yes

16) I'm thinking of a number. I take away 2 and then halve the result. The answer is 12.

[1]

What is the number I am thinking of?

17) Calculate the percentage of the bar that is shaded.

%

[1]



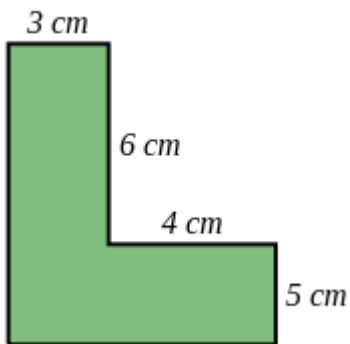
18) A recipe requires 5 cups of flour to make 7 cookies.  
How many cups of flour will be needed to make 28 cookies?

[1]

cups of flour

19) Here is a figure made of two rectangles.

[1]



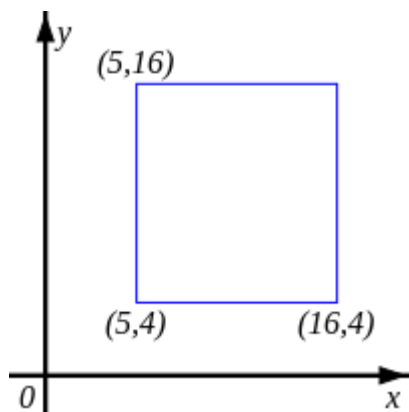
(a) What is the **perimeter** of the figure?  cm

(b) What is the **area** of the figure?  cm<sup>2</sup>

(c) How much greater is the area of the figure than its  
perimeter?

20) What are the coordinates of the missing corner of the rectangle?

[1]



The coordinates are (  ,  )

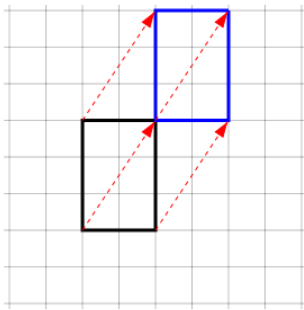
## Solutions for the assessment KS2 NC Test - Paper 3 Reasoning

- 1)  
20 , 12  
15 , 17
- 2) missing numbers are -3 and 3

- 3) 5
- 4) 13

- 5) Amount = 840 ml
- 6) 0.8, 0.812, 0.86, 0.873, 0.89

- 7) sixty-four thousand, one hundred and fifty-eight



- 8)
- 9) 1.87 kg
- 10)  $64 \div 8 = 8p$   
 $45 \div 5 = 9p$   
8 is less than 9, so shop A is cheaper

- 11)  
17 1 18  
13 12 11  
6 23 7
- 12) 8.531
- 13)  $\frac{5}{12} < \frac{4}{9}$
- 14) missing numbers are 0.35 and 0.39
- 15) 4, 1, no  
4, 0, no  
4, 0, no
- 16) 26

- 17) 40 %
- 18) 20 cups of flour

- 19) Perimeter = 36 cm, Area = 53 cm<sup>2</sup>, Difference = 17
- 20) (16,16)